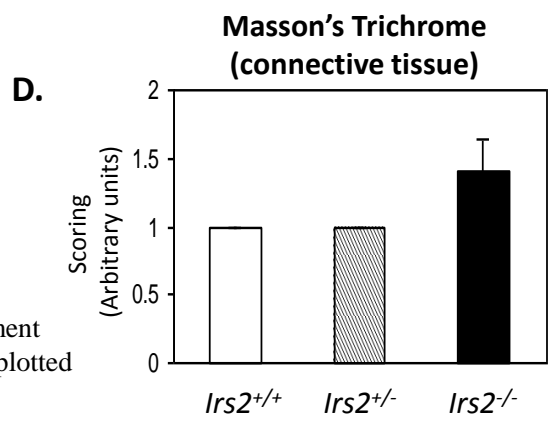
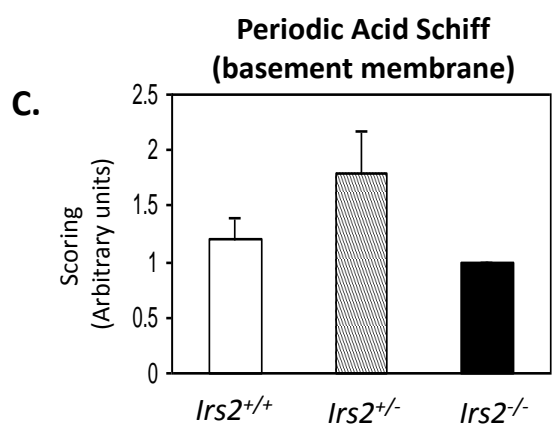
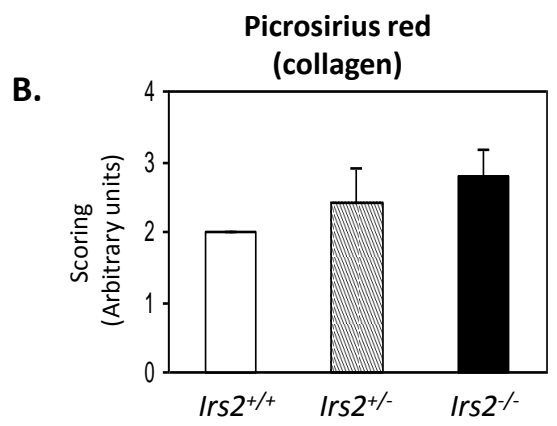
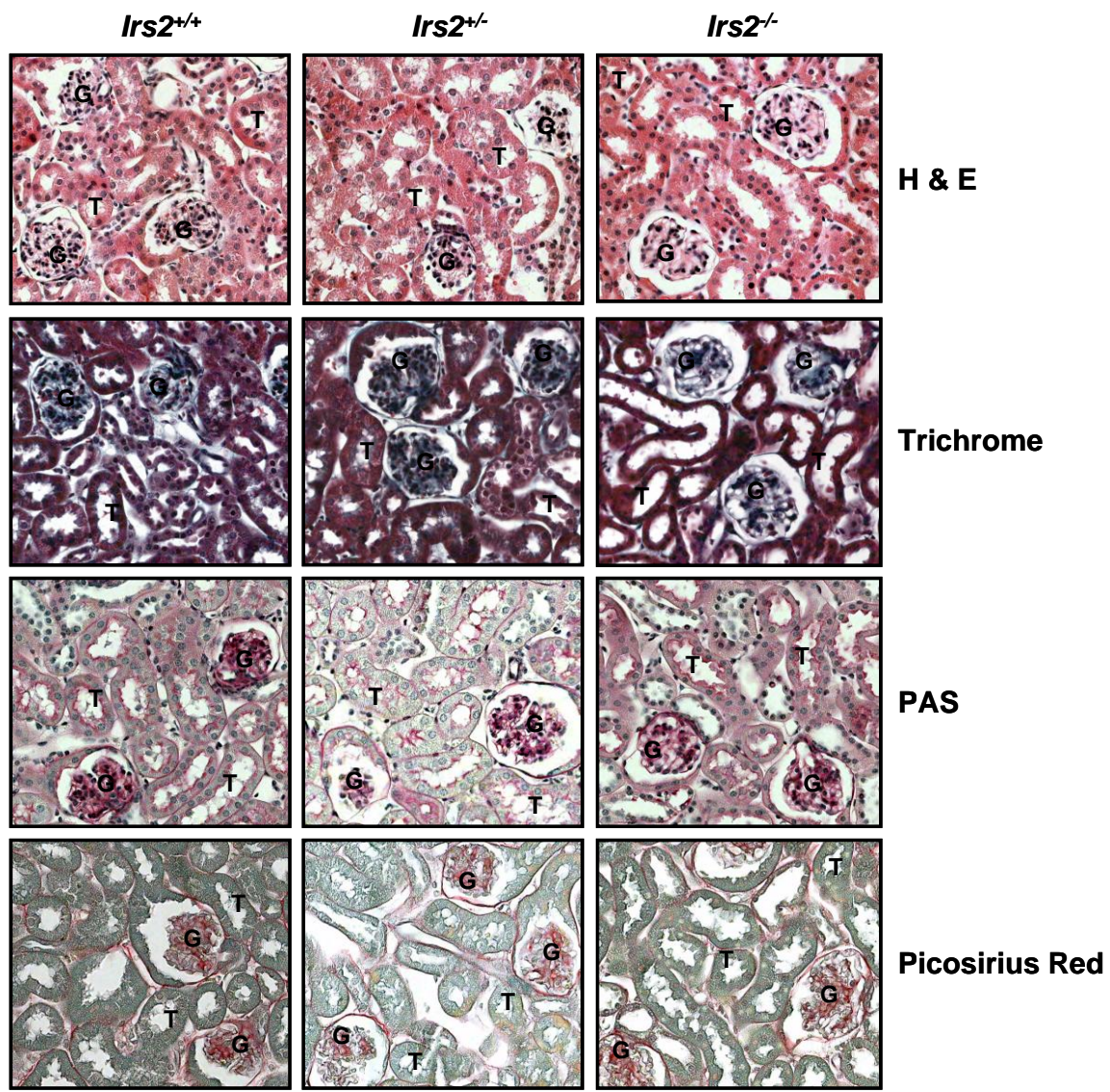


A.



Additional file 1 Figure S3. *Irs2* deletion does not significantly alter kidney structure.

Sections from 13-14 wk *Irs2*^{+/+}, *Irs2*^{+/-} and *Irs2*^{-/-} mice (n=5) were stained with Haematoxylin and Eosin (A). Slides (n=5 for each group) were scored blindly for collagen staining (Picosirius Red, (B)), glycogen/basement membrane (Periodic Acid Schiff (C)) and connective tissue (Masson's Trichrome staining, (D)). Data were plotted as mean score +/- SEM.